



Windows 95/98 Palace Server Guide

Version 4.4

Copyright © 1999 Communities.com, All rights reserved.

Windows 95/98 Palace Server Guide, version 4.4

July, 1999

This document and the software described in it are furnished under license and may be used or copied only in accordance with such license. Except as permitted by such license, the contents of this document may not be disclosed to third parties, copied, or duplicated in any form, in whole or in part, without the prior written permission of Communities.com.

The contents of this document are for informational use only, and the contents are subject to change without notice. Communities.com assumes no responsibility or liability for any errors or inaccuracies that may appear in this book.

Restricted Rights Legend. For defense agencies: Use, reproduction, or disclosure is subject to restrictions set forth in subparagraph (c) (1) (ii) of the Rights in Technical Data and Computer Software clause at DFARS 52.227-7013, and or similar successor clauses in the FAR, or the DOD or NASA FAR Supplement.

Unpublished right reserved under the Copyright Laws of the United States.

The Palace, PalacePresents, Palace Authoring Wizard, PalaceEvents, PalaceServer, The Palace Viewer, The Palace Authoring Tool, The Palace Viewer logo and The Palace logo are either trademarks or registered trademarks of Communities.com. All rights reserved. All other trademarks are the property of their respective owners.

Printed in the USA.

Contents

Chapter 1	Introduction	9
Chapter 2	Getting Started	11
	Requirements	11
	Installing and configuring your Palace site	12
	Registering your Palace site	13
	Getting your site up and running	13
	Starting your Palace site	13
	Connecting to and visiting your Palace site	14
	Connecting through the standalone Palace User Software	14
	Connecting through The Palace Viewer	15
	Making your Palace site accessible to others	16
	Embedding The Palace Viewer on a web page	16
	The Palace Directory	17
	Direct web access for standalone Palace User clients	17
	Publicizing events	18
	Shutting down your Palace site	19
Chapter 3	Administering Your Palace Site	21
	Maintaining Palace files and network settings	21
	Art and sounds	22
	Setting user access and privileges	23
	Changing the look of your Palace site	24
	Using a new Palace template file	24
	Creating new room artwork	24
	Using The Palace Authoring Tool	25
	Using The Palace User Software	25
	Owner and operator commands	26
	Maintaining information for web-based users	27
	Embedding the applet	27
	Controlling Palace Viewer links to your Palace	28
	Setting up custom avatars	29
	Maintaining your site page in The Palace Directory	30
Chapter 4	The Palace Control Panel Interface	35

The control panel	35
Menus	36
File	36
Edit.....	37
Options	37
Help	37
Buttons	38
Preferences.....	38
General.....	38
Visitors.....	40
Network.....	43
Security.....	44
The Palace Viewer.....	46
Display.....	47
Chapter 5 Iptscrae	51
Chapter 6 Quick Reference.....	53
Appendix A The Palace Client Plugin API.....	55
Appendix B Palace Command Summary	57
Guest commands	57
Member commands	57
Operator commands	59
The owner commands.....	60
Index.....	63

Preface

This manual describes how to create and maintain your own Windows 95/98 Palace site. It explains how to obtain the software, setup, launch, customize, and maintain your Palace site.

Sections of this manual

This manual has the following sections:

- *Introduction*

This section introduces The Palace community and Palace site software.

- *Getting Started*

This section guides you through the installation of your Palace site.

- *Getting Your Palace Up and Running*

This section explains how to launch your Palace site and customize it with new art, rooms, and scripts. It also describes how to make it accessible to Palace users.

- *Administering Your Palace Site*

This section explains how to administer your site, including maintaining Palace files, the Palace owner and operator functionality (formerly god and wizard), setting user privileges, maintaining web-user access, and customizing your rooms and artwork.

- *The Palace Control Panel Interface*

This section describes your Palace control panel, buttons, menus, and preferences.

- *Iptscrae*

This section briefly describes the Palace Iptscrae Language, and how to get more information on it.

- *Quick Reference*

This is a reference to common tasks and how to do them.

In addition, there is an index, an appendix about The Palace Client Plugin API, and an appendix summarizing the Palace commands.

Manual conventions

This manual has the following conventions:

- Code samples are set in *Courier*, whether standing alone or embedded in the text. Text you enter is in *Courier italics*.

-
- Technical terms appear in ***boldface italic*** in the text in their first appearance, usually accompanied by a definition.
 - Graphical User Interface (GUI) elements, such as menu items and buttons, appear in **boldface**.
 - References to other books, chapters, or sections are in *Italic*.

NOTE – Notes to the user look like this.

Other sources of information

Besides this *Windows 95/98 Palace Server Guide*, The Palace provides other online manuals; these are all available from the Palace website. The following documents are especially useful:

- *Palace Viewer Guide*. This document describes how to use The Palace Viewer. This is the web-based Palace client.
- *The Palace Authoring Tool Guide*. This document describes how to use The Palace Authoring Tool, which lets you configure artwork, layout, scripts, and the look and feel of your Palace site. The Palace Authoring Tool is installed with the Windows 95/98 version 4.4 server, and is also available as a standalone download from the Palace website.
- *User's Guide*. This manual describes how to use obtain, setup, and use the standalone Palace User client software. You will need The Palace User Software to create and edit rooms. Both a Windows and Macintosh version are available.
- *Wizard's Guide*. Describes the responsibilities of owners and operators (formerly known as Palace gods and wizards), and details the Palace client's operator interface and commands.
- *Iptscrae Language Guide*. This manual is a programming and language reference guide for the Palace Iptscrae language.

In addition to the Palace online manuals, check out the Palace Home Page at <http://www.thepalace.com> for support, information, and online documentation.



Introduction

Welcome to The Palace! The Palace technology provides software and tools that let web developers add graphical chat and event capabilities to existing Websites. But more than that, The Palace also is a diverse online world of communities that you can explore to socialize, learn from, and exchange ideas with other users.

Using The Palace Server software, you can create your own Palace site. This site is your own personal graphical chat environment that can host an unlimited number of users.

Setting up a Palace is quick and easy. In fact, you can create your own custom Palace in minutes, using standard room art or even importing your own. You then can customize your site as much as you want with different rooms, artwork, and even executable scripts. When you get to be a more advanced operator, you can then learn an endless number of advanced interactive tricks and shortcuts with Iptscrae the programming language that comes with The Palace software.

This manual documents how to set up your own Palace personal server. For information on The Palace and how to use its interface, see *The Palace User Guide*.

The Palace community has three types of users:

- *Owners* (formerly known as administrators or gods) are the superusers of their Palace servers. By default, you are the owner of your own Palace, and can give this capability to others by giving them your owner password. Your role as the owner includes creating, maintaining, running and evolving your Palace Site. Palace owners can run all Palace commands, and possess a special set of their own; these are fully documented in *The Palace Wizard's Guide*. You execute owner commands through your Palace client while connected to your server. To do this, you establish an owner password for the client.
- *Operators* (formerly known as wizards) are “power users” you entrust with special powers and responsibilities on your site. By default, you are also an operator of your own site. Operators can create and destroy rooms, alter room-level scripts, ban unruly users, and generally run the place. Some operators lean more toward the *design* angle of the job, concentrating on creating new rooms and room-level Scripts, while others prefer the *social* angle, and spend their time hanging out in The Palace, keeping things moving, interesting, and within community standards.

Like owner capabilities, operator capabilities are enabled on The Palace client through a operator password you establish for your site. You can let others be operators by giving them this password. Operator capability is described in more detail in *The Palace Wizards Guide*.

- **Users** are the people who visit your and other Palace sites using The Palace client software. There are currently two types of Palace clients: The Palace Viewer, which is web-based applet (you can even embed it into your own web page) and The Palace User software, which is a standalone application you can download from The Palace website.

2

Getting Started

This section describes everything you need to know in order to get your Palace site up and running:

- *Requirements* on page 11
- *Installing and configuring your Palace site* on page 12
- *Registering your Palace site* on page 13
- *Getting your site up and running* on page 13
- *Connecting to and visiting your Palace site* on page 14
- *Making your Palace site accessible to others* on page 16
- *Shutting down your Palace site* on page 19

Requirements

The Palace site software has the following requirements:

RAM: 32 megabytes.

Disk space: The amount of disk space required for your Palace Site initially depends on the number and size of the sounds and graphics you decide to make available. Palace sites typically take 5-20 megabytes of space. Large sites can take over 200. If you have a popular Palace with many users wearing props, your prop file (`pserver.prp`) can also grow quite large; it's not uncommon to hear of 10- or 15-MB propfiles. See *Maintaining Palace files and network settings* on page 21 for more information.

NOTE – Art and sounds are stored on your Palace web server. You can keep these on the mini-web server provided by your Palace installation, or move this media to a web server of your own. See *Art and sounds* on page 22 for more information.

Operating system: Windows95, Windows98 or Windows NT. Note that the Windows 95/98 Palace Server runs as an application on Windows NT, not a service. There is another product, the Windows NT Palace Server, which runs as a service on Windows NT.

Web browser: Though not actually required to run your Palace, you need a Web browser to see the administrative web pages. Use either Microsoft Internet Explorer version 4.0.1 or better, or Netscape 4.0.8 or better.

Installing and configuring your Palace site

To download The Palace, go to the Downloads page of The Palace website (www.thepalace.com) and select The Palace Server. You can choose among several options for downloading:

- If you are a new user, you should choose the complete download option. This steps you through picking an initial template (that is, a look and feel for your Palace), registration, and downloading The Palace software with your template artwork and sounds. The standard Palace templates include such things as an office and beach resort. Your registration code will be emailed to you.
- If you already have a Palace and the templates you want, but no registration code, you can choose the registration option.
- If you have an older version of The Palace with a valid registration code, you can just choose to download the latest Palace software.
- You can also download as many Palace templates to your machine as you like. Then, you can pick and choose among them whenever you want to change the look of your Palace.

After you install, you can customize your Palace look and feel by obtaining new templates. You can also customize your Palace room art, layout and scripts by using The Palace Authoring Tool. This is a standalone web-based tool available from The Palace website (www.thepalace.com). To access this tool, click The Palace Authoring Tool button on your control panel (see *Buttons* on page 38), or select **Palace Server:Palace Authoring Tool** from the Windows **Start:Programs** menu.

For information on The Palace Authoring Tool, see the documentation on The Palace website's **Help** page.



Registering your Palace site

To run your Palace site, you must register it with Communities.com. Registering your site lists it with The Palace Directory. This is a directory of all registered Palace sites in the entire Palace space, and resides on The Palace web site (www.thepalace.com). Users can click your Palace link to bring up a web page with your Palace information. If you do have your Palace running, users can even access your Palace from your Palace Site page.

You receive your registration code by e-mail when you register The Palace software. When you first launch your Palace site, you are prompted for this registration code. Your Palace will not run without a valid registration code.

For more information on The Palace Directory and maintaining information about your Palace listing there, see *The Palace Directory* on page 17.

Getting your site up and running

Once you have installed your Palace site, you can go ahead and start it. Note that once you start your site, you must still connect to it through a Palace client in order to view it. This is documented in *Connecting to and visiting your Palace site* on page 14.

Starting your Palace site

On your machine, select **Programs:PalaceServer:The PalaceServer for Windows** from the Windows **Start** menu, or click The Palace icon. **The Palace Server** control panel launches.



The Palace Server control panel

For detailed information on using this control panel, see *The Palace Control Panel Interface* on page 35.

The first time you start your Palace site, you are prompted for the registration code that was mailed to you when you downloaded the software.

Connecting to and visiting your Palace site

Once your Palace site is up and running, you can explore it, socialize with other people, and do various maintenance tasks such as adding scripts, rooms, and artwork. You do this by connecting to your site from a Palace **client**. A Palace client is similar to a Web browser; it is a graphical interface that lets you visit Palace sites (including your own). There are two type of Palace clients you can use:

- The standalone **Palace User Software**. This is an application that you download from the `Downloads` page of The Palace web site, and install on your machine. You must use this client to add and edit rooms, or use the operator interface (described in *Owner and operator commands* on page 26).
- **The Palace Viewer**. This is a web-based viewer that you can access from a web page. With The Palace Viewer, you can visit Palace sites, socialize with other users, and perform owner and operator commands from the command-line interface. However, you cannot administer and maintain your rooms; you must use the standalone Palace User Software to do so.

Both clients let you connect to your site either locally (that is, from the same machine) or remotely (that is, from a different machine).

Connecting through the standalone Palace User Software

You can use either the Windows- or Macintosh-based Palace User Software to access your site. Before trying to connect, be sure your site up and running (using the instructions in *Getting your site up and running* on page 13). After you access your Palace for the first time, you can bookmark it or select it from the list of recently-visited Palace sites.

Connecting from a client on the same machine

This section describes how to connect from The Palace User Software for Windows 95/NT that resides on the same machine as your site.



1. From The Palace site's control panel, click the Visit This Palace button. In your Palace **Preferences:Display** page, make sure you also set your launched-client preference to The Palace Windows client (using the field *The "Visit This Palace" button should...* on page 49).
2. Your Palace client launches, and automatically connects to your Palace site.



If your Palace User Software is already running, you can connect to your own Palace site directly from the client:

1. Select **Connect to a Palace** from the client's **File** menu.
2. In the resulting **Connect** dialog, enter one of the following:
 - To connect without having to go through an Internet Service Provider (ISP), enter `127.0.0.1` or `localhost` in the **Connect** window. This is The Palace local host address.
 - If you are on a Local Area Network (LAN), or going through an Internet Service Provider (ISP), you can enter your machine's name or IP address.

Connecting from a client on a different machine

You can connect to your Palace site from The Palace User Software that sits on a different machine; this machine can be either a Windows 95/98/NT, or Macintosh. The following steps demonstrate connecting from a remote Windows 95/NT machine:

1. Start your Palace client by choosing **Programs:The Palace:The Palace32** from your Windows **Start** menu.
2. Connect to your own Palace site. To do this, select **Connect to a Palace** from the client's **File** menu.
3. In the resulting **Connect** dialog, enter your Palace site's machine's address in the format *machine.domain*; for example, `test.communities.com`. You can also enter the machine's IP address (such as `205.999.99.99`)

Connecting through The Palace Viewer

In contrast to The Palace User Software (which is an application that resides on your machine), The Palace Viewer is an applet. Applets are programs that run inside of a web page, often initiated when you click their link.

The Palace Viewer applet can reside on any web page. By default, your Palace site page (in The Palace Directory) contains a link to a Palace Viewer pointing to your Palace site; see *Maintaining your site page in The Palace Directory* on page 30 for more information. You can also embed The Palace Viewer on one of your own web pages, and point it to your Palace. See *To embed The Palace Viewer on a web page* on page 28 for more information.

▼ To connect to your Palace site using The Palace Viewer

1. Launch your Palace site according to the instructions in *Getting your site up and running* on page 13.
2. Do one of the following:



On the site's control panel, click the Visit This Palace button. In your Palace **Preferences:Display** page, make sure you also set your launched-client preference to The Palace Viewer (using the field *The "Visit This Palace" button should...* on page 49)

Or

- a. From your web browser, launch a web page containing a Palace Viewer pointing to your Palace. By default, you can follow the link from your Palace Site Page in The Palace Directory (on www.thepalace.com).
- b. Click the link to The Palace Viewer.

Making your Palace site accessible to others

Users can visit your Palace site when you have it up and running. There are multiple ways users can access your site; these are all documented in *The Palace User's Guide* and *The Palace Viewer* documentation.

Embedding The Palace Viewer on a web page

Embedding The Palace Viewer applet on one of your web pages and pointing it to your Palace site encourages users to visit your Palace. Anybody visiting your web page can also visit your Palace site simply by clicking on the link. They do not have to download any software themselves.

To attract even more visitors to your site, you can encourage others to embed The Palace Viewer in their web page and point to your site. They don't have to have a Palace site installed to do this.

See *To embed The Palace Viewer on a web page* on page 28 for more information.

While you might welcome having your Palace linked to by many web pages, you might also want to control the web content surrounding this link. For example, if you operate a family-oriented Palace site, you probably don't want links to your Palace site appearing in web pages containing adult content. For information on controlling which web pages can point to your Palace site, see *Maintaining information for web-based users* on page 27.

You can set privileges and access rules for Palace Viewers using the **Preferences** page of your Palace control panel. For information on how to control access from Palace Viewer users, see *Setting user access and privileges* on page 23.



The Palace Directory

By default, your Palace site is listed in The Palace **Directory**. The Palace Directory resides on The Palace website, and lists all registered Palaces in the entire Palace space.

Each Palace in the Directory has its own Palace site page; users access this page by clicking on The Palace's link in the Directory. Palace site pages include information such as a description of your Palace site, any announcements you want, and a link that the user can click to visit your Palace site. This page is displayed 24 hours a day, whether or not your Palace site is up and running.

NOTE – To allow users to access your site, you must have your Palace running.

You can control the content of your site page by using The Palace Site Administration form. This is a web page that is automatically created when you register your Palace. For information on the Site Administration Form, see *Maintaining your site page in The Palace Directory* on page 30.

Direct web access for standalone Palace User clients

Even if users use the standalone Palace User Software instead of the web-based Palace Viewer, you can give them direct web access to your Palace site.

You can give users your machine address (in the format *machine.domain*, such as *test.communities.com*) or IP address (such as *205.999.99.99*) so they can access it directly without having to search for it on The Palace Directory. They can enter this name or address in either their Palace client **Connect** window (if they have the standalone Palace User Software) or their web browser. Once they have visited your site, they can return to it by bookmarking it or selecting it from their list of previously-visited Palaces.

You can even give Palace users access to specific rooms in your Palace site. To do so, give the user your Palace site URL, port number, and the room ID (from your Palace User Software, enter operator mode using the instructions in *Owner and operator commands* on page 26, go to the specific room, then select **Wizard:Room Info** to find the ID). Users can then enter this URL in their web browser. You can also include this reference in one of your Palace site rooms as a "hot spot" link. Note that users cannot access a URL-addressable room through their Palace User Software's **Connect** window.

This example illustrates the extended URL specification, where 89 is the room ID on The Palace site located at *mansion.thepalace.com* (port 9997).

```
palace://mansion.thepalace.com:9997/89
```

NOTE – If you don't provide a port, The Palace client always assumes port 9998.

To include a room reference in your web page, use the HTML `<a href>` command. To include a room reference as a hotspot in a Palace room, use the `Netgoto` command. See *The Iptscrae Language Guide* for more information on the `Netgoto` command.

Publicizing events

You can host events on your Palace site and encourage people to attend them. To publicize your event, list it in your Palace Site Page and also The Palace Event Calendar, which publicizes events to the entire Palace community on The Palace website (www.thepalace.com).

14 Jun 1999 9:00 PM EST 1 hours	Event: 1999 Argo Awards Ceremony Host: bsquared Palace: Xena: Warrior Palace (palace://xena.srt.net) Description: The Argo Awards give fans the chance to voice their opinions about XWP episodes from the latest season. Join us for a live ceremony announcing all the winners.	Movies & TV
16 Jun 1999 6:00 AM PDT 24 hours	Event: ZDTV Chat Day Host: ZDtv and Electric Communities Palace: ZDTV (http://www.zdnet.com/zdtv/interact/chatwithus/) Description: The ZDTV Palace launch and monthly "Chat Day!" Live text from selected rooms in The ZDTV Palace will be broadcast on a splitscreen during ZDTV programming. Visitors will have an opportunity to interact directly with hosts and panel guests!	Chat Grand Opening Movies & TV
16 Jun 1999 8:00 PM EST 3 hours	Event: Party at the Rainfall Garden Host: Rain Palace: Rainfall Garden (palace://rain.dynip.com) Description: We are having a Party at the Rainfall Garden, its being hosted by Smokey and Autumn, come Join us and wear your best small animal av. its small animal night at Rainfall. All are invited to attend. Lots of Fun!	Avatars/Props Music Party
16 Jun 1999 9:00 PM EST 1 hours	Event: Episode Chat Host: LaLa & Netgvr1 Palace: Xena: Warrior Palace (palace://xena.srt.net) Description: Come chat with LaLa & Netgvr1. This	Chat Movies & TV

The Palace Event Calendar

To list your event in your Palace site page, use The Palace Site Administration form (described in *Maintaining your site page in The Palace Directory* on page 30). To list your event in The Palace event calendar, click the link on The Palace website (www.thepalace.com) and fill out the event form.

You can use The Palace Events Moderator (PalacePresents) to host moderated auditorium-style events such as meetings, lectures, and other "one-to-many" interactions. The Palace Events Moderator allows you to control every aspect of these events, from show time and participant notification to security and web-based "slide shows." You can get The Palace Events Moderator at

<http://www.thepalace.com/downloads>.



Shutting down your Palace site

You might need to shut down your Palace site periodically for maintenance.

▼ To shut down your Palace from a local machine

Select **File: Exit** from your Palace's control panel.

Or

Close The Palace site's window as you would close any Windows window.

▼ To shut down your Palace site from another machine

1. Connect to your Palace site from your Palace client (this must be the standalone Palace User Software).
2. Select **Wizard Mode** from the **Options** menu, and enter your owner password to enter owner mode.
3. Type the owner command ``shutdown` in your client input window, and press the Enter key.

3

Administering Your Palace Site

This section describes how to administer your Palace site. This includes:

Maintaining Palace files and network settings on page 21

Setting user access and privileges on page 23

Changing the look of your Palace site on page 24

Owner and operator commands on page 26

Maintaining information for web-based users on page 27

Maintaining your site page in The Palace Directory on page 30

Maintaining Palace files and network settings

As the **owner** of your Palace, you need to periodically maintain the actual Palace files on your machine. One file in particular that will grow noticeably in size over time is the file that contains your props (the `pserver.prp` file). This file stores the binary data associated with all props used in your Palace site by all members. This file can become quite large if your site becomes popular; it's not uncommon to hear of 10- or 15-MB propfiles. There are two ways to control the size of this file:

- Use the ``purge` or ``flushprops` command. ``purge` is an operator command and ``flushprops` is an owner command that has been built into the system for prop maintenance. For more information see *The Palace Wizard's Guide* online at The Palace website.
- Make a backup copy of your `pserver.prp` file, while it contains only those props you want it to contain. Periodically thereafter, you may overwrite your current propfile with the backup version. However, do not copy the prop file while your Palace is running. This can crash your Palace, corrupting the prop file and negating any changes you have made in authoring mode.

Art and sounds

All artwork and sounds for your Palace web-based users reside on your Palace web server. When users access your Palace, this web server provides the artwork and sounds for them. In addition, if a user with the stand-alone Palace User Software accesses your Palace, the sounds and artwork for that room are downloaded to their machine from this web server.

Your Palace installation has a built-in mini web server to serve this media. You can keep your media here, or move it to another own web server (for example, to reduce the load on your machine). Note that this web server is not intended, nor supported, as a general purpose web server.

NOTE – If you move your media to a different web server, consider leaving a copy on your machine. If the web server goes down, standalone Palace User Software users will still then be able to access the media from your machine. Web-based users, of course, will not be able to access any media.

▼ To put your art and sounds on a different web server

1. Bring up the **Palace Server Preferences** by clicking **Preferences** on your Palace's control panel.
2. Click **Network**.
3. Check the field **Use an external web server for media**.
4. In the field **URL for the media server**, enter the URL pointing to this new location.

▼ To customize sounds for your site

Your sounds are contained in `.wav` and `.au` files. The `.wav` files are for Palace User Software clients; the sounds in the `.au` files are for Palace Viewer clients visiting your site. Note that `.au` files need to be 8KHz and either 8 or 16 bit mono.

1. To make a sound available for your site, make sure it exists in both formats, and copy the sound file(s) to the `media` folder of your palace server (by default, `\PalaceServer\palace\media`).
2. If you want users to be able to access and play this sound from their **Sounds** window, you must add the sound to your sounds list file. In your `soundlist.txt` file (residing in the same directory), list the name of the file, minus the file extension. For example:

```
Amen  
Applause  
Belch  
Boom
```



Setting user access and privileges

You can set rules for users visiting your Palace sites.

NOTE – To access your Palace site preferences, click **Preferences** on your Palace's control panel.

What to do	How to do it
<ul style="list-style-type: none"> • Set the number of users who can access your Palace site, or any room within your Palace site. • Purge props at regular intervals • Let users whisper (hold private conversations). • Maintain a log of conversations. 	Palace Preferences <i>General</i> on page 38
<ul style="list-style-type: none"> • Let users wear props. • Let users create rooms and draw within a room. • Allow non-registered users (guests), and how many can visit at a time.¹ • Allow user scripts (called robots) on your site.² • Allow operators, and specify what they can do.³ 	Palace Preferences <i>Visitors</i> on page 40
<ul style="list-style-type: none"> • Set operator password to give to other users • Automatically kick off users who are trying to hack this operator password (by entering it more than 3 times). 	Palace Preferences <i>Security</i> on page 44
Kick the user off the system.	The 'banuser or 'kill command.
<ul style="list-style-type: none"> • Prevent a user from returning immediately after being kicked off • Automatically kick off users who send lots of messages • Set this message limit 	Palace Preference <i>Security</i> on page 44
Control access by and create custom avatars for web-based users.	See <i>Maintaining information for web-based users</i> on page 27

1. Guests have limited privileges to your Palace site; they cannot wear props nor have custom avatars.
2. You can also allow robots room-by-room through from your Palace User Software. Enter operator mode using the instructions in *Owner and operator commands* on page 26, go to the specific room, then select **Wizard:Room Info**, and check **No User Scripts**.
3. For more information, see *Owner and operator commands* on page 26.

Changing the look of your Palace site

You can change the look of your Palace site by customizing and adding rooms. These rooms can be linked together, have original artwork, and scripts that execute when users enter the rooms. You can use a new template from The Palace, change your configuration files through The Palace Authoring Tool, or add the new artwork one room at a time through the stand-alone Palace User Software.

Using a new Palace template file

The easiest way to change the look of your Palace is to download a template from The Palace website and then have your Palace use this new template. Templates are the look and feel of your Palace site; they contain artwork, sounds, scripts and a configuration file (.pat) containing information about your Palace rooms. The Palace website has many different configuration files you can download, such as a beach resort or an office. You can download as many of these templates as you like, and change the look and feel of your Palace whenever you want.

To obtain a new template, go to the downloads page and select the templates section. To use this new template, configure your Palace to use the .pat file associated with this template.

▼ To use a new .pat file

1. From your server control panel, open **Preferences:General**.
2. In the **Palace Configuration** field, navigate to where your .pat files reside (generally in the `psdata` directory). Select the .pat file you want.

Creating new room artwork

Each room in your Palace site corresponds to a graphics file (GIF file). You can use background images from anywhere; but they must meet the following requirements:

- **512x384 pixels.**
- **256 color GIF**
- **Conform to The Palace Palette color scheme.** To ensure this, download The Palace Palette from The Palace website, open your image in a graphics editing tool (such as JASC PaintShop Pro or Adobe Photoshop), and load The Palace palette according to your graphic tool's instructions. You can also open a Palace image in your graphics editor (using The Palace User Software) and save The Palace Palette from that image, again according to your graphic tool's instructions.

Once you have the palette source, open your image file in the graphics editor and convert it to 8 bit/256 color, loading The Palace Palette to convert the image to The Palace color scheme.



When you have your room artwork ready, you can customize your site with these new background images either through The Palace Authoring Tool or your Palace client's operator mode (formerly known as Wizard Mode).

Using The Palace Authoring Tool

The easiest way to create room art is through The Palace Authoring Tool. This is a stand-alone web-based tool that lets you design your site layout, import room background art, create doors, and add scripts.



To start The Palace Authoring Tool, click The Palace Authoring Tool button on your control panel. Your Web browser launches a page where you access the tool. See the online manual for this tool on The Palace website (www.thepalace.com) for more information.

Using The Palace User Software

If you create your own graphics files for rooms and do not use The Palace Authoring Tool, you can add them through the stand-alone Palace User Software client. You must have at least operator capabilities to do this.

NOTE – You cannot add graphics files through The Palace Viewer.

▼ To add graphics through The Palace User Software

The following steps describe using operator mode from a Windows 95/NT Palace client. The Macintosh version has slightly different menus and windows.

1. From your Palace User Software, enter operator mode (described in *Owner and operator commands* on page 26).
2. When operator capability is enabled, you will see the **Wizard** menu. Use the options on this menu to create and link rooms. (For detailed information on these **operator** menu items, see *The Palace Wizard's Guide*.)
3. Use the **New Room** option to create a new room on your Palace.
4. Use the **Room Info** option to bring up the **Room Info** window. From this window, enter a name for the room, attach your graphics file in the **Picture** field (browsing to get it if necessary), and set options for the room.
5. Enter authoring mode by selecting the **Authoring Mode** option. Now, instead of activating doors and rooms, you can edit them when clicking on them.
6. Use the **New Door** option to add a door to this room. Then, use the **Door Info** option to set options for this door, such as its destination, and add a script. Doors that execute scripts, such as connecting to other Palaces or activating web pages, are called **Spots**. You need to change this door type from **Passage** to **Normal**.

Owner and operator commands

NOTE – *Owner* and *operator* are the terms for the former *god* and *wizard*, respectively.

You perform most of your Palace site maintenance through The Palace control panel. However, there are some tasks you perform through your client. These can include

- Writing, adding or modifying rooms, and testing out your changes
- Enforcing crowd control and behavior standards

You perform these tasks with *owner* and *operator* commands entered through The Palace User Software. These two types of users are described in *Introduction* on page 9.

Operator commands let you do things such as change room graphics, add scripting, and remove unruly visitors. The *owner* commands let you do everything a operator can do and more. These commands and capabilities are discussed in detail in *The Palace Wizard's Guide*, available from The Palace website. For a list of these commands, see *Palace Command Summary* on page 57.

To become an operator or owner, you must enter the correct password on The Palace client. You establish these passwords when you install your Palace server.

▼ To enable operator and administrator mode on your client

1. Start your client.
2. Do one of the following:

Select **Wizard Mode** from your Palace client's **Options** menu (for a Macintosh client, select **Wizards** from the **Edit** menu). In the resulting password dialog, enter the operator or owner password.

Or

In the text input box, type `~susr owner or operator password`

▼ To change your owner and operator passwords

1. On your Palace control panel, bring up the Preferences window by clicking **Preferences**.
2. On the resulting **Preferences** window, click **Security**.
3. In the **Owner password** and **Operator password** fields, enter the appropriate passwords.



Or

1. Connect to your Palace through The Palace User Software (described in *Connecting through the standalone Palace User Software* on page 14).
2. Enter owner mode using your current owner password.
3. Enter the owner's new password with the following syntax:

```
'godpass newpassword
```

4. To change the operator password, type:

```
'wizpass newpassword
```

You retain your operator status until:

- You turn it off,
- You disconnect from the current Palace, or
- A local owner turns the operators Permission off.

NOTE – Your operator status is not saved anywhere on your Palace site. If you want to use operator or owner powers next time you sign on, you will have to enter the password again. This is a security feature; it keeps others who use your client from automatically becoming operators themselves.

You retain your owner status until:

- You turn operator mode off, or
- You disconnect from the current Palace.

Maintaining information for web-based users

Many of your Palace users will be accessing your site from the Web, using the web-based Palace Viewer. You can make this Viewer more accessible to users, control web-based links to your Palace site, and provide custom avatars for these web-based users.

Embedding the applet

The Palace Viewer is an applet, and can be embedded on one of your web pages. Applets are programs that run inside of a web page, often initiated when you click their link. Embedding The Palace Viewer on your web site and pointing it to your Palace encourages users to visit your Palace. Anybody visiting your web page can instantly then visit your Palace site simply by clicking on the link. They do not have The Palace client software installed on their machine themselves.

To attract even more visitors to your site, you can encourage others to embed The Palace Viewer in their web page and point to your site. They don't have to have a Palace site installed to do this.

▼ To embed The Palace Viewer on a web page

1. Go to the site page of the Palace you wish to point to (see *Maintaining your site page in The Palace Directory* on page 30).
2. On that Palace's site page, click the field on linking to that Palace.
3. You receive online instructions on how to embed The Palace Viewer on your web page, pointing to that Palace.

Controlling Palace Viewer links to your Palace

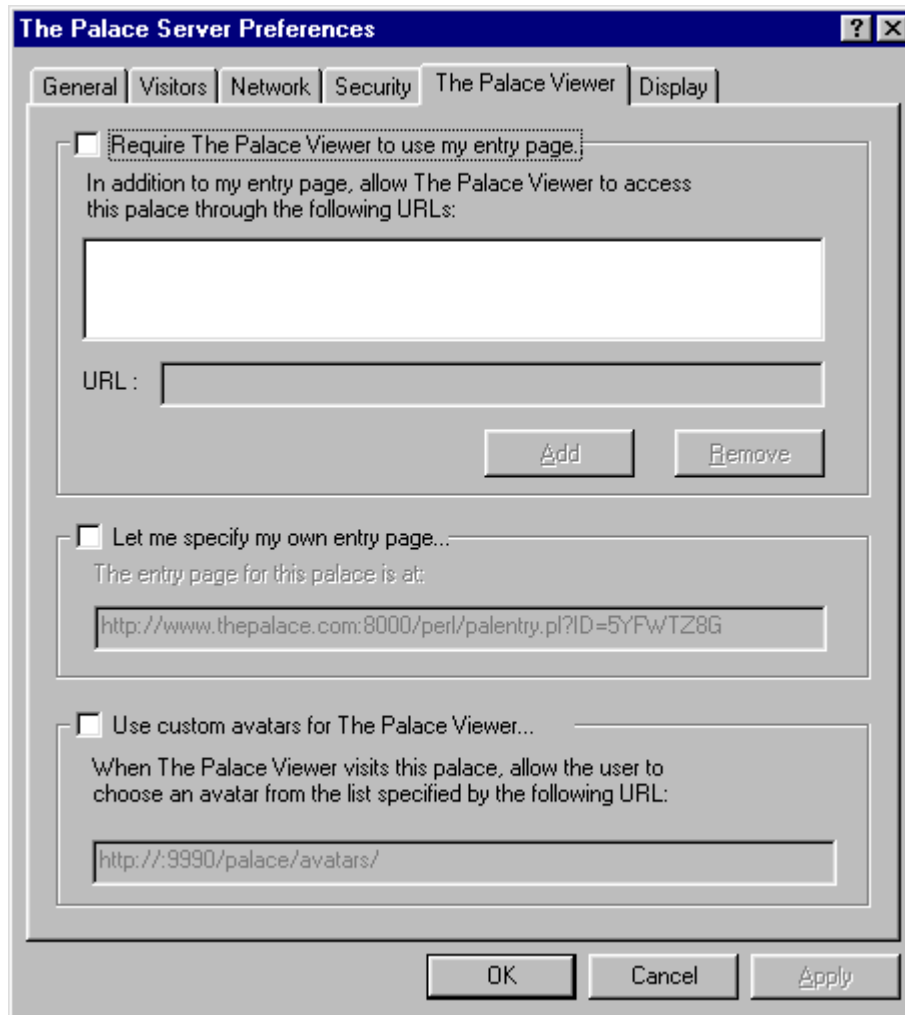
Anybody can embed The Palace Viewer in their web page and point to your Palace site. Note that this does have issues. While you might welcome having your Palace linked to by many web pages, you also might want to control the web content surrounding this link. For example, if you operate a family-oriented Palace site, you probably don't want links to your Palace site appearing in web pages containing adult content.

You can set security that deals with web-based users. You can specify:

- **An authorized directory of URLs.** You can specify that only certain web sites are authorized to contain pages with a Palace Viewer pointing to your Palace site.
- **An entry page for non-authorized access.** If somebody tries to access your Palace site through a Palace Viewer that resides in a non-authorized web page, that user will access this page instead of your Palace site. By default, this page is automatically generated by Communities.com. However, you can change it to one of your own. You can customize your entry page to contain any content you want, such as a password form. It doesn't even have to contain The Palace Viewer link.

Once you specify a custom entry page, your Palace Page in The Palace Directory also points to it when somebody clicks the link to your Palace.

Use the **The Palace Viewer** page from your Palace control panel's **Preferences** to set these two restrictions. For information on this page, see *The Palace Viewer* on page 46.



Setting up custom avatars

By default, all Palace Viewer clients access a standard avatar library of over 100 images provided by Communities.com. You can provide an alternate set of images for these users by either creating your own, or directing users to somebody else's avatar library. For example, if your site is based on a science fiction theme, you could provide a set of alien creatures as default avatars.

An avatar library can contain up to 103 different avatars. Each avatar image is contained in its own GIF file.

NOTE – Custom avatars are only applicable for web-based users (Palace Viewer and InstantPalace).

▼ To create a custom avatar library

1. Create one 44x44 pixel GIF file for each of your avatar images. Use a transparent background for the portions of the image you don't want visible.
2. You must name these files using the format `cfnumber.gif`, where number ranges from 0 to 103. For example, `cf0.gif`, `cf1.gif`, `cf2.gif`, etc.
3. Put these files in a directory where your Palace web server can access them. If you are using the default web server provided with your Palace installation, this directory is *Palace installation directory*\palace\avatars (this directory structure is `Program Files\Communities.com\PalaceServer\palace\avatars` if you are using the default installation).
4. Bring up your Palace site's **Preference** window (click **Preferences** on the Palace's control panel)
5. Click **Palace Viewer**.
6. Check the **Set up Custom Avatars for Java clients** checkbox.
7. In the text entry box, enter the new URL where the new avatar library is in the form:

```
http://server/directory/
```

where *server* is your Palace web server address, and *directory* is the directory where the avatar images reside. The default local settings for the URL are entered by default. You must also enter the port number if it is different from the default port of 9998.

For example, if your machine IP number is `299.199.99.99` and you are using the default installation and the built-in Palace web server, this would be (assuming the a port of 9990):

```
http://299.199.99.99:9990/palace/avatars/
```

If you have a dynamic IP address (for example, if you use a dial-up modem), you can also use the variable `currentIPAddress`:

```
http://[currentIPAddress]:9990/palace/avatars
```

8. When a Palace Viewer user logs onto your Palace, they access this new avatar library.

Maintaining your site page in The Palace Directory

Registering your Palace site automatically creates a web page for it in The Palace Directory; this is called your Palace site page. Users can access this page by clicking your Palace link in The Palace Directory, or the Palace Info button on The Palace Viewer.

Your site page contains information such as:



- Whether or not your Palace is up and running.
- A link to your Palace. When users click this link, they go to the entry page for your Palace. See *Controlling Palace Viewer links to your Palace* on page 28 for more information.
- A link to a form for inviting friends to The Palace.

This page is publicly accessible and is online 24 hours a day, whether or not your Palace is running. Of course, you must have your Palace running in order for users to connect to it.

You can control the information in this page by using the Site Administration Page.

▼ To access the Site Administration Page



1. Click the Site Administration Page button from either your Palace Control Panel or from your Palace's Site page.
2. If you are accessing from the web, you are prompted for your owner password (see *Owner and operator commands* on page 26).
3. Your web browser launches and goes to your Palace Site Administration Page. This page has the following fields:

- **Server Name**

This is the name of your Palace specified through The Palace **Preferences**.

- **Current Rooms**

This is the number of rooms you currently have. To edit rooms, use The Palace Authoring Tool.

- **Current Users:**

This is the number of users currently in your Palace.

- **Description:**

Enter a description here for your Palace.

- **Announcement:**

You can list announcements on your website, such as upcoming events.

- **Image for Site Page:**

You can display a small image on your site page, for example, a room in your Palace. Enter the location of the image file here.

- **Date Founded:**

- **Owner Name:**

Enter your name as you would like it to appear on the site page.

- **Owner email:**

Enter your email address here, if desired.

- **Owner Profile ID:**

This is your registered Palace Profile ID number; users can click this to bring up your Palace Profile. You have a Palace profile ID if you are a registered Palace client user.
- **Invitation Subject**
- **Invitation Body**

When a user clicks **Invite your friends** on your site page, this sends an email to their designated recipients inviting these recipients to visit your Palace. Enter the subject header and the text of this email here.
- **Operating Hours**

List the hours that your Palace is up and running.
- **URL to Download Palace Graphics**
- **URL to Download Palace Sounds**

Users can download your graphics and sounds in advance, which bypasses a lengthy download process when they try to enter each of your rooms. For standalone Palace User Software users, this media is stored on their machines. For web-based Palace Viewer clients, this media is stored in their browser cache; it will be available until their cache is flushed.
- **Terms of Service**

Enter any guidelines and terms of services for users.
- **Community Home Page URL**

If you are a member of a web community, you can enter its URL here.
- **Operator n Profile ID**
- **Description**

If you have operators for your Palace (designated power-users to whom you give your operator password), you can enter their Palace Profile IDs and descriptions here. They must be registered Palace client users to have a profile. A user can then click the profile ID to bring up that operator's Profile page.
- **Primary Language**
- **Secondary language**

These indicate the language visitors will be using on your site.
- **Rating**

Enter a rating for your site here (for example, *This site is rated G for kids!*)
- **Members-only**

This is checked if you do not allow guests.
- **Related Palace N**

Enter enter related Palaces here. Use the lookup link to find these Palaces.



- **List Palace in Directory?**

Make sure this box is checked if you want your Palace to list in the online Palace Directory.

- **Prop Control**

This is checked if you have prop control turned on.

- **Palace Viewer Entry URL**

This link to the entry page for your Palace; that is, the page that contains The Palace Viewer pointing to your Palace. For more information, see *The Palace Viewer* on page 46.

NOTE – Some fields on your Palace Site Page, such as **Members Only** or **Prop Control** is on, are set only through your Palace's control panel.

4

The Palace Control Panel Interface

This chapter has the following sections:

- *The control panel* on page 35
- *Menus* on page 36
- *Buttons* on page 38
- *Preferences* on page 38

The control panel

Your Palace has a simple graphical interface. This control panel appears on your screen when you launch your Palace.



The Palace Server control panel

The control panel has several sections:

Menu bar. These menus are described in *Menus* on page 36.

Button row. These buttons are described in *Buttons* on page 38.

A large scrolling textbox (the Log Panel). This displays important information regarding the operation of your Palace, the network, and all users currently logged on.

Status Indicator. This tells you if your Palace is running correctly. A green light means your Palace is running. A red light indicates errors.

Menus

The Palace has several menus.

- *File* on page 36
- *Edit* on page 37
- *Options* on page 37
- *Help* on page 37

File

The **File** Menu options maintain Palace records.

New Log File...

Choosing this option opens a dialog box that prompts you to supply the name of the Log File you wish to create (a date-based default name is provided).

NOTE – The Log kept by your Palace site is not the same as the Log kept by the log in your client window. It records only the network-level information which appears in the large scrolling text area of the control panel, not room-level activity or speech (such as appears in the Client Log Window).

Close Log File

This menu command closes the Log File. This command is only available if the Log is currently open.

Register...

If you didn't register your Palace during installation, you can do by selecting this option, and filling in your name and registration code in the resulting dialog box. This registration code was generated and emailed to you during the download process.



If you do not register your Palace, your Palace does not get listed in The Palace Directory.

Exit

This menu command shuts your Palace site down.

Edit

This menu has the following options:

Copy

This command allows you to copy selected text from the textbox. The hotkey combination for this command is Control-C.

Clear Log Window

This command clears the contents of the textbox.

Options

This menu has the following items:

Preferences

This displays **The Palace Server Preferences** window. Selecting this item is the same as clicking the Preferences button. See *Preferences* on page 38 for more information.

Visit my Palace

Select this option to start your Palace client and connect to your Palace. Which client starts (The Palace Viewer or The Palace User Software) depends on what you set in the field *The "Visit This Palace" button should...* on page 49. Selecting this option is the same as clicking the Enter My Palace now button.

Site Administration Page

Select this option to load your Palace Site Administration page (described in *Maintaining your site page in The Palace Directory* on page 30). Selecting this option is the same as clicking the Info Administration Page button.

Palace Authoring Tool

Select this option to launch a web page from which you can access The Palace Authoring Tool. You use this tool to customize the look and feel of your Palace. Selecting this option is the same as clicking The Palace Authoring Tool button.

Help

This menu contains a link to the web-based online help.

Buttons

The buttons on the button bar include:



- Click this button to start your Palace client and connect to your Palace. Which client starts (The Palace Viewer or The Palace User Software) depends on what you set in the field *The "Visit This Palace" button should...* on page 49.



- The Preferences button displays **The Palace Server Preferences** window. See *Preferences* on page 38 for more information.



- The Info Administration Page button loads the Info Administration Page for this Palace into the web browser. You use this page to control the information about your Palace in The Palace Directory. See *Maintaining your site page in The Palace Directory* on page 30 for more information.



- This button launches a web page from which you can access The Palace Authoring Tool. You use this tool to customize the look and feel of your Palace. See the documentation with this tool for more information (available on The Palace website, www.thepalace.com).



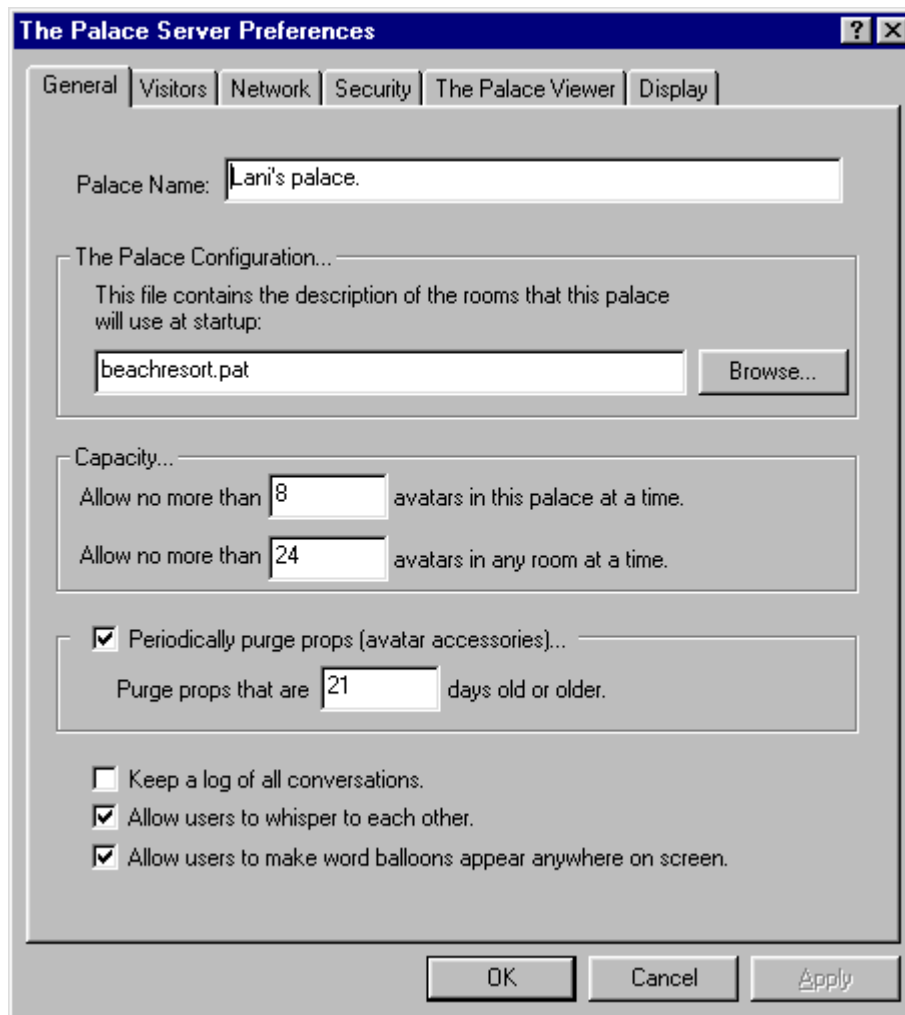
- The Help button loads the Palace help documentation into the web browser.

Preferences

Clicking **Preferences** brings up **The Palace Server Preferences** control panel. This panel has several tabbed pages. Click a tab to access that page.

General

Use this page to set general information about your Palace.



The Palace Server Preferences General page

Use this page to set general options.

- **Palace Name**

This is the name of your Palace. This is the name that is registered with The Palace Directory.

Your Palace name directly affects users logging on through the standalone Palace User Software:

- Your site name is added to their list of recently-visited Palaces (this list is automatically compiled).
- In addition, The Palace uses this name to create a folder on their machines in which your sounds and pictures are stored (this folder will be called `\Palace root\Media\serverName\`). If you change your Palace name after going

online, your users will have to rename this file or re-download all of your media. This is not an issue for The Palace Viewer users, since it uses your Web browser's cache to hold this media.

- **The Palace Configuration**

The Palace provides several standard templates you can choose from to customize the look of your Palace. These template files are all available to download from The Palace website (www.thepalace.com); they are in the format *templatename.pat*. When you install your Palace software, you choose an initial template. To change the look of your Palace (for example, to change from a business office look to a beach resort look), you can download another template, and specify the template's configuration file (.pat) in this field. These files generally reside in the `psdata` directory.

- **Capacity...**

- **Allow no more than x avatars in this palace at a time:**

Allows you to set the maximum number of people who will be allowed to log into your Palace at one time. After this limit has been reached, anyone attempting to log in will receive a "Connection Refused" message. This field is limited by your license and the limits of your operating system.

- **Allow no more than x avatars in any room at a time**

Lets you set the maximum number of users that can be in a room at one time on your Palace site. If too many people are allowed into a room, conversation can become difficult.

- **Periodically purge props (avatar accessories)..**

Check this field to purge avatar props from other users that can clutter your Palace site. You can set a date after which props are automatically purged.

- **Keep a log of all conversations.**

This lets you maintain a chat log of events and conversations happening in your Palace. This is stored in `/palace/logs/date chat.log`.

- **Allow users to whisper to each other.**

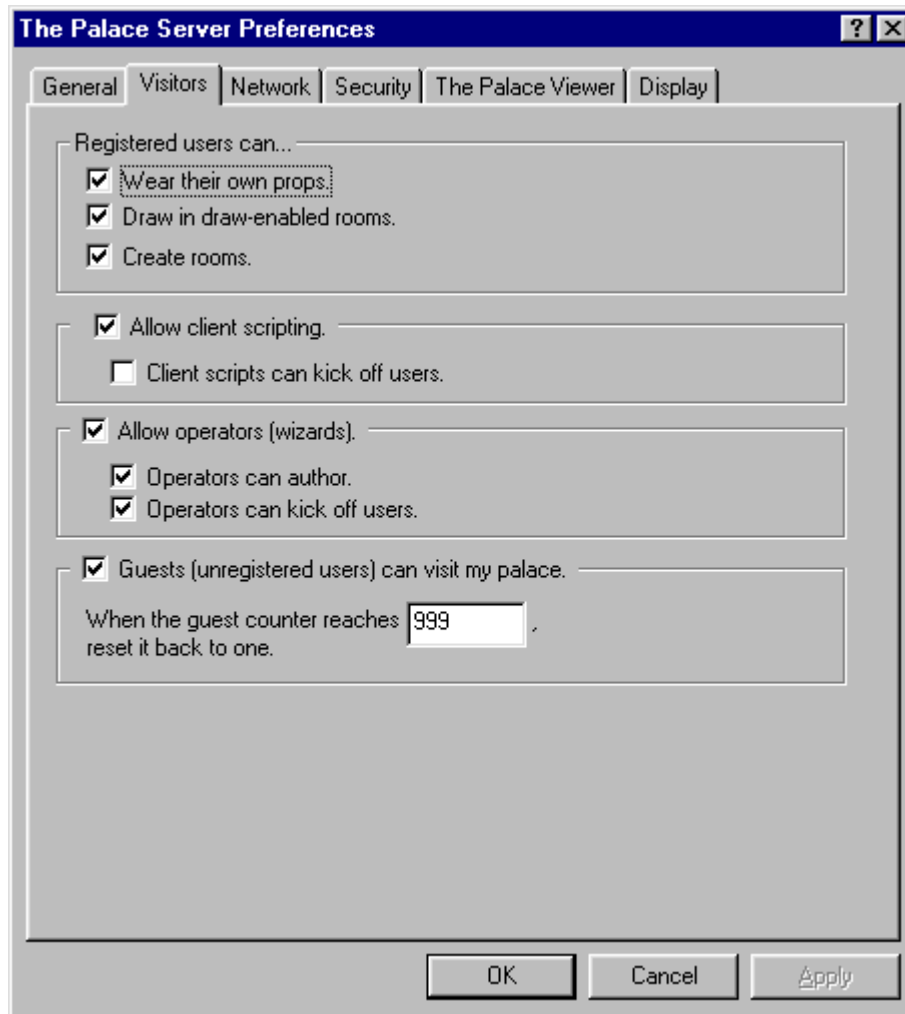
Whispering lets a user have a private conversation with another user.

- **Allow users to make word balloons appear anywhere on screen.**

If you check this field, users can "spooof". Spooofing lets a user "throw" their word balloon anywhere on the screen using the `@x,y message` command (see *The Palace User's Guide* for more information). This can be a major cause of disruption, and is not allowed at many sites.

Visitors

Use this screen to set privileges for the people who visit your Palace.



The Palace Server Preferences Visitors page

This screen has the following fields:

- **Registered Users can...**

Use this field to set various options for registered users visiting your Palace.

- **Wear their own props**

When this option is checked, members can create (and leave behind) their own props. If off, wearing props is not allowed on your Palace.

- **Draw in draw-enabled rooms**

This option determines whether or not members can use their painting tools while on your Palace. Painting can cause lag on busy Palace sites, so many Palace owners decide to turn it off altogether (or to allow it, but only in a few rooms). You might want to turn this option off when occupancy gets high. You can also set drawing capabilities per room; use The Palace User Software client's **Wizard:Room Info** dialog to set this.

- **Create rooms.**

Allows users to create their own “member rooms” in your Palace. These temporary rooms delete themselves automatically as soon as (A) there’s no one in them and (B) their creators log off. All member rooms are deleted when you shut down your Palace.

- **Kick off other users**

This option determines whether or not a member can use the ``kill` command on another user. If this option is checked, any member can boot another user off of your Palace with the kill command, and the **Kill** button in the user’s **Find User** window is enabled for all members. Since this function is of real value in only a small minority of Palace sites, in general this option should remain off.

- **Allow client scripting..**

When checked, this field allows members to run their own scripts (via `Cyborg.ipt`) while logged into your Palace. For more information on `Cyborg.ipt` and its uses, see *The Palace User's Guide* and *The Iptscrae Language Guide* on The Palace website. Consider that many members of The Palace community have gone to great lengths to develop creative and practical scripts. Rather than using this command to disable scripts on a global basis, consider disabling them on a room-by-room basis instead (through the **Room Info** option on The Palace client’s **Wizard** menu).

- **Client scripts can kick off users.**

If you check this, your Palace will ignore a `kill` command executed from a client script.

- **Allow operators (wizards)**

This option determines whether or not your Palace accepts the password you set for operators (formerly known as wizards). Operators are “power-users” that can do special functions; see *Owner and operator commands* on page 26 for more information. If this option is not checked, your operators cannot access their special menus or perform operator commands while on your site.

- **Operators can author**

This option determines whether or not your operators can enter Authoring Mode through their client while on your Palace site. If checked, your operators can add, delete or change rooms, doors, and spots; and can edit the Scripts associated with these elements.

- **Operators can kick off users**

This option determines whether or not operators can use the `~kill` command on other users. When checked, your operators can boot users off your Palace.

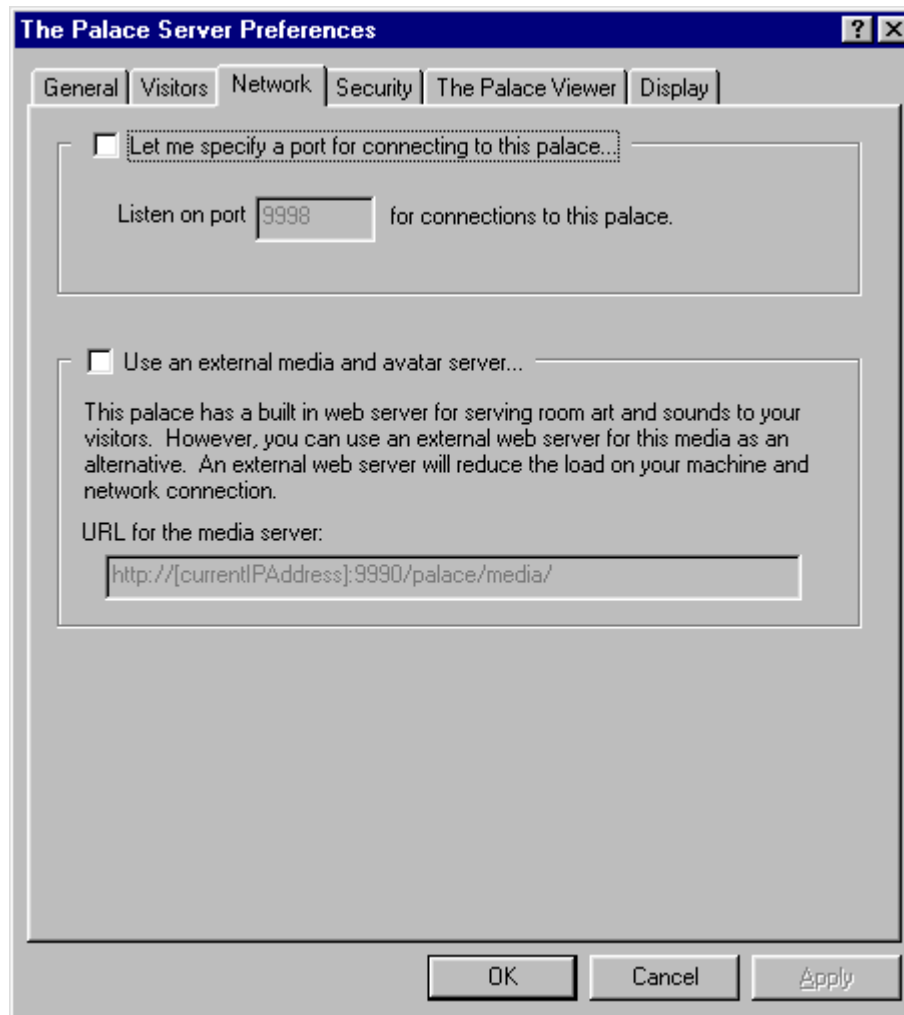
- **Guests (unregistered users) can visit my palace**

When checked, this option allows unregistered Palace users (“Guests”) to connect to your Palace site. If not, unregistered connections are refused. Guests have most of the capabilities of other users, but cannot wear props nor custom avatars. You can limit the number of guests by setting a number for the guest counter.



Network

Use this screen to set network preferences for your Palace site.



The Palace Server Preferences Network page

This page has the following fields:

- **Let me specify a port for connecting to this palace...**

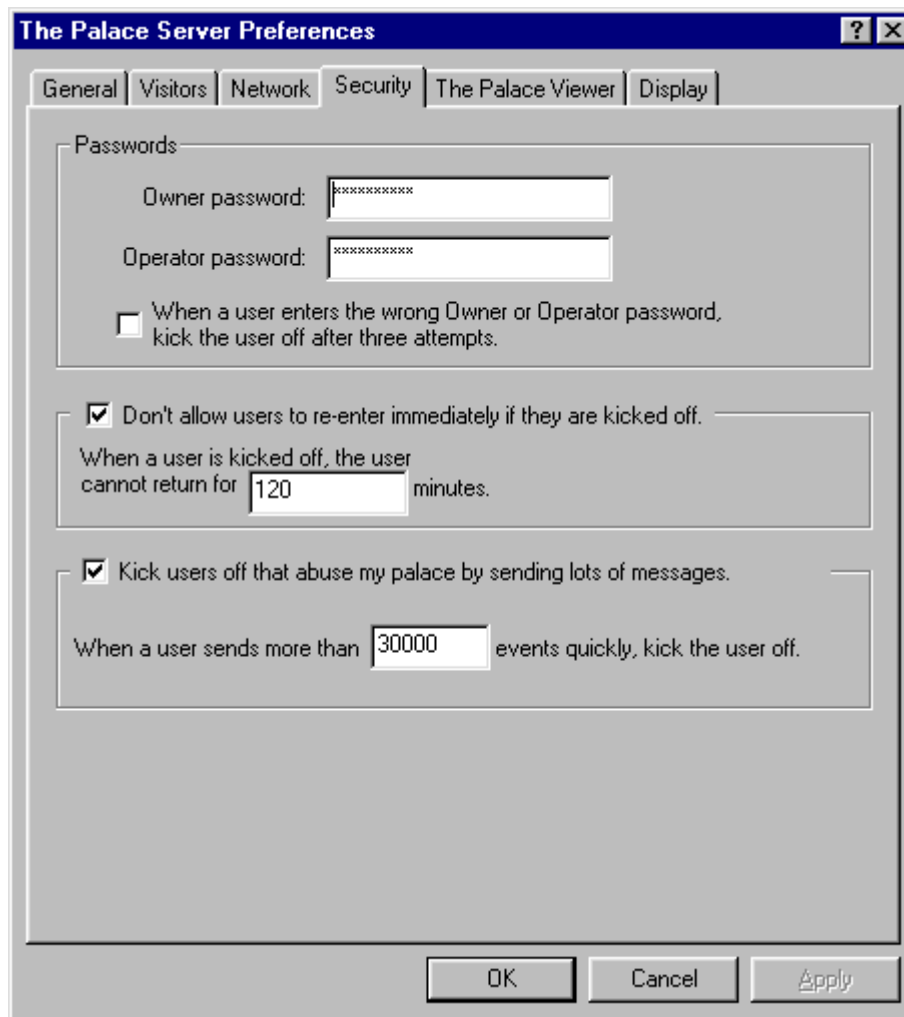
This lets you set the port number your Palace uses to listen for connections from Palace clients. The default is 9998. Generally, you do not need to change this. If you do, consult your machine's administrator for available ports on your machine.

- **Use an external web server for media...**

By default, your Palace installation contains a built-in mini web server. All of the artwork and sounds for your site reside on this server. You can keep this media in this location, or move it to a web server of your own. If you use another web server, enter the URL of the new media location here. See *Art and sounds* on page 22 for more information.

Security

Use this screen to control security settings for your Palace site.



The screenshot shows a Windows-style dialog box titled "The Palace Server Preferences". It has several tabs: "General", "Visitors", "Network", "Security", "The Palace Viewer", and "Display". The "Security" tab is selected. The dialog contains the following fields and options:

- Passwords:**
 - Owner password: [password field]
 - Operator password: [password field]
 - When a user enters the wrong Owner or Operator password, kick the user off after three attempts.
- Don't allow users to re-enter immediately if they are kicked off.
When a user is kicked off, the user cannot return for minutes.
- Kick users off that abuse my palace by sending lots of messages.
When a user sends more than events quickly, kick the user off.

At the bottom of the dialog are three buttons: "OK", "Cancel", and "Apply".

The Palace Server Preferences Security page

This page has the following fields:



- **Owner Password:**

This option allows you to set the password that grants owner-level access via the standalone Palace User Software. The Palace **owners** are superusers; they have all the privileges of operators, and even more. For example, owners are able to permanently kick people off the system, enter locked rooms, and perform other acts by using special owner commands.

Normally, the only person who should have owner access is you. Your Palace site automatically recognizes your status as owner, but it is unknown to The Palace client you are using until you enter the password. If you don't want anyone to have owner-level access via the Client software, simply leave the password box blank (or delete the existing text).

- **Operator Password:**

Enter the operator password here for your Palace. **Operators** are "power-users" that can use the authoring features of the software and execute special operator commands. By default, you should also be an operator of your own site. You can also give this password to others lets them gain operator-level access to your Palace site.

NOTE – REGARDING PASSWORDS: High-level access should not be taken lightly. Just as with operator level access, someone with owner level access has the power to permanently ban users (or annoy them away) from your Palace site. Your owners and operators can potentially do bad things to your site and your data. If you don't want anyone to have high-level access, leave your password entries blank. If security is compromised, change your passwords. Most of all: don't give special access to anyone unless you implicitly trust their intentions and capabilities!

- **When a user enters the wrong Owner or Operator password, kick the user off after three attempts.**

If you check this field, anybody trying to "hack" their way into owner or operator status on your site will be kicked off after three times of entering the wrong password.

- **Don't allow users to re-enter immediately if they are kicked off.**

Check this field to prevent a user from immediately returning to your Palace after you kicked them off (for example, by using the `kill` command documented in *Operator commands* on page 59). You can specify the number of minutes the banned user has to wait before returning (called the death penalty).

- **Kick users off that abuse my palace by sending lots of messages**

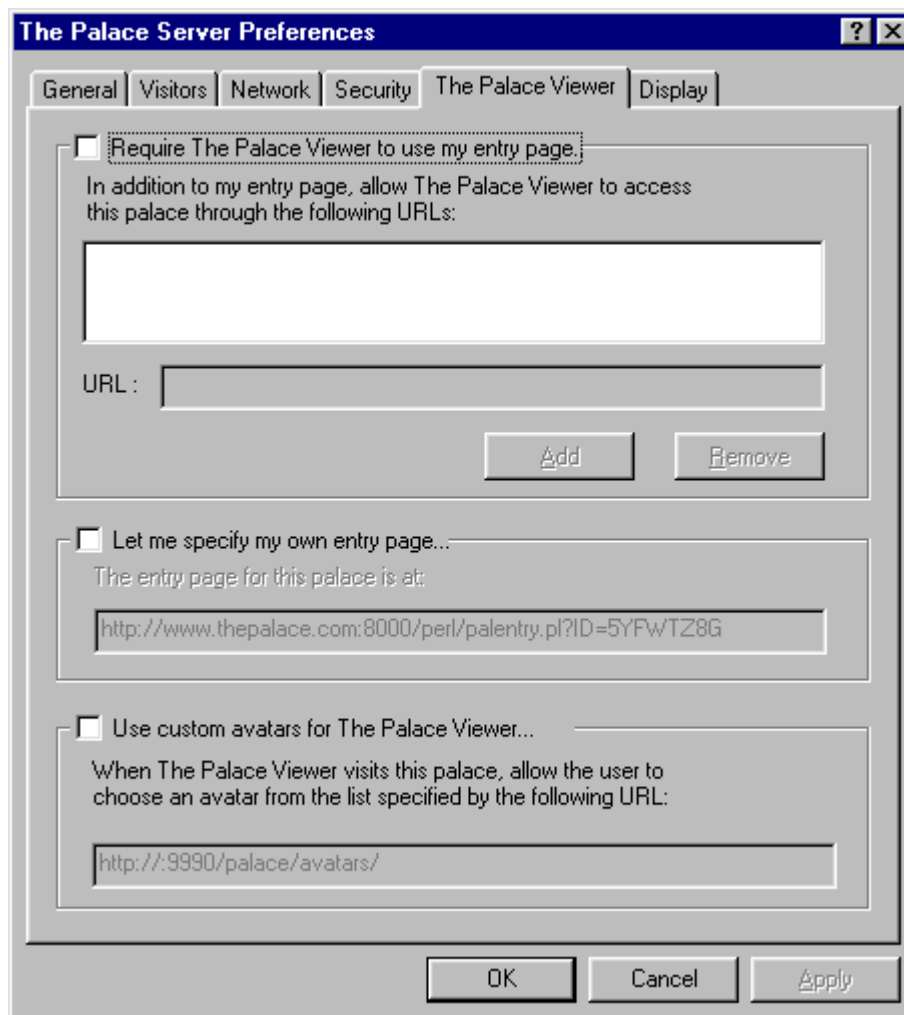
This field allows you to set your Palace site's sensitivity to *flooding*, in terms of events per second. A *flooder* is a user who mistakenly or maliciously runs a looping or very complex script, causing your Palace to be "flooded" with a rapid sequence of commands. This type of activity can cause serious lag and affect the experience of all users on your Palace.

You can specify the threshold number of events. Users violating this limit are automatically disconnected, and unable to re-connect for a number of minutes equal to the value you set for your Palace's Death Penalty (see the previous field *Don't allow users to re-enter immediately if they are kicked off.* on page 45).

Be careful not to set this number too low, however, because normal users might be kicked off. A suggested value is 150.

The Palace Viewer

Use this screen to control settings for The Palace Viewer clients.



The Palace Server Preferences The Palace Viewer page

This page has the following fields:

- **Require The Palace Viewer to use my entry page**



If this field is checked, the Web browser loads a specified web page whenever a link is followed to your Palace site, instead of starting The Palace Viewer itself. This lets you control the web content surrounding this link. For example, if you operate a family-oriented Palace site, you probably don't want links to your Palace site appearing in web pages containing adult content.

By default, this entry page is generated automatically by The Palace. However, you can specify one of your own by checking the field *Let me specify my own entry page...* on page 47.

- **In addition to my entry page, allow The Palace Viewer to access this palace through the following URLs:**

If you require an entry page, you can also specify which web sites are authorized to contain pages with a Palace Viewer pointing to your Palace site. If somebody tries to access your Palace site through a Palace Viewer, and that Palace Viewer link does not appear in this list, that user will access your entry page instead of your Palace site.

Enter the URL in the **URL** field, and click **Add**. To remove a URL from the authorized list, select it, and click **Remove**.

- **Let me specify my own entry page...**

Check this field to use your own entry page instead of the default one provided by The Palace. This entry page can contain any content you want, such as a password form. It doesn't even have to contain The Palace Viewer. Enter the page URL in the text box. For more information, see *Controlling Palace Viewer links to your Palace* on page 28.

Once you specify a custom entry page, The Palace Directory will also point to it when somebody clicks the link to your Palace.

- **Use custom avatars for The Palace Viewer...**

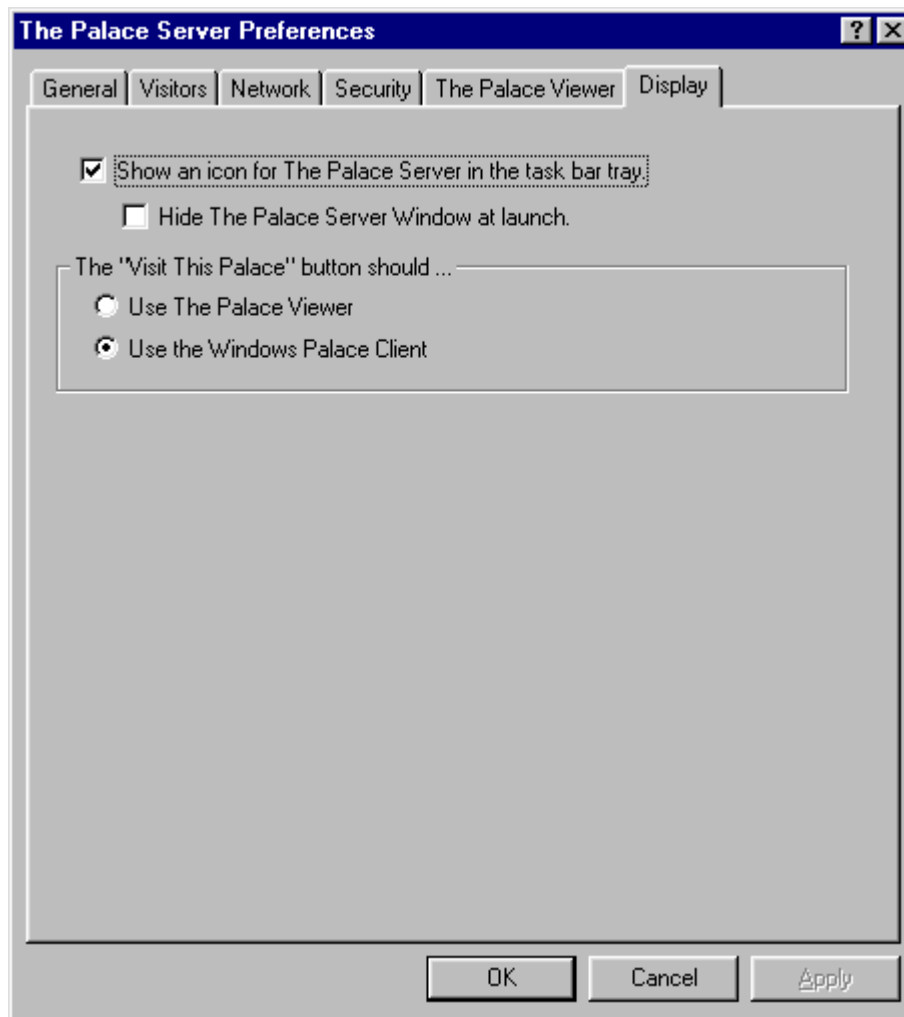
By default, all Palace Viewer clients access a standard avatar library of over 100 images provided by Communities.com. You can provide an alternate set of images for these users by either creating your own, or directing users to somebody else's avatar library.

To use a custom avatar library, check this field, and enter the URL pointing to the avatar directory. If you create the avatars yourself, point this URL to your Palace web server (either the standard one provided during installation, or your own), to your avatar directory in your media folder.

For more information on setting up custom avatars and the URLs to set for their access, see *Setting up custom avatars* on page 29.

Display

Use this window to control how your Palace site displays with general Windows settings.



The Palace Server Preferences Display page

This page has the following fields:

- **Show an icon for The Palace Server in the task bar tray**

If you check this field, The Palace Server icon appears in your Windows task bar tray at the lower right hand corner of your screen.

- **Hide The Palace Server Window at Launch**

Check this field to hide The Palace control panel window after you start your Palace. Your Palace will still be running, but the control panel does not display on the screen (this can free up screen space for smaller computer monitors).

You must check the **Show an icon for The Palace Server in the task bar tray** field in order to hide your control panel window. The reason for this is that you need to click the icon in the task tray to show the control panel again.



- **The "Visit This Palace" button should...**

The Palace control panel lets you launch a client directly, that connects to your Palace. You can use this field to specify which client to launch: the standalone Palace User software (the Windows Palace client), or the web-based Palace Viewer. If you specify the Windows client, you must have this client loaded on your machine. If you specify The Palace viewer, your web browser launches to your Palace entry page (described in *Require The Palace Viewer to use my entry page* on page 46) where you can click the link to your Palace.

5

Iptscrae

You do not have to create complex interactive systems to keep a good Palace going. It is quite possible to create and run a popular Palace Site using no more than the information presented thus far, without getting any deeper than creating some background pictures and building a few Doors. Much of the time, after all, your users are really entertaining *each other*. All they ask of *you* is a cool environment to do it in. And yes — if you build it, they will come.

That said...

It may not be *necessary* to devise complex interactive elements for your Palace, but it is certainly *possible*, and some Palace Operators find it a goal worth shooting for. With a little work, blinking lights, rolling dice, slamming Doors, flying objects, sound effects, spoofs, and unseen forces of all kinds can be created with **Iptscrae**, the Palace's built-in programming language.

To learn how to add such advanced elements to your Palace, see *The Iptscrae Language Guide* available online at The Palace web site.

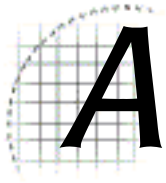
6

Quick Reference

This section is a quick reference to common Palace tasks, and how to do them:

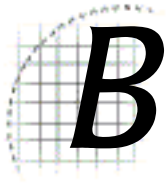
What to do	How to do it
Start your Palace site	<i>Getting your site up and running on page 13</i>
Explore your Palace site (by connecting through a client)	<i>Connecting to and visiting your Palace site on page 14</i>
Change the look of your Palace site with new rooms and artwork	<i>Changing the look of your Palace site on page 24</i>
Add scripts to rooms	Use The Palace Authoring Tool. See the documentation for this tool for more information. Or, go directly through the client (see <i>Changing the look of your Palace site on page 24</i>).
Set user privileges (such as allowing props, whispering, and drawing, and enforcing crowd control)	<i>Setting user access and privileges on page 23</i>
Set passwords for owners (the superusers) and operators (the power users)	<i>Owner and operator commands on page 26</i>
Embed The Palace Viewer applet on your web page	<i>Embedding the applet on page 27</i>
Control which websites can point Palace Viewers to your Palace.	<i>Controlling Palace Viewer links to your Palace on page 28</i>
Create a custom avatar library	<i>Setting up custom avatars on page 29</i>
Maintain your Palace site page in The Palace Directory	<i>Maintaining your site page in The Palace Directory on page 30</i>
Create a custom entry page to your Palace for web-based customers	<i>Let me specify my own entry page... on page 47</i>
Tell others how to access your Palace site	<i>Making your Palace site accessible to others on page 16</i>

What to do	How to do it
Allow operators (that is, power users)	<i>Visitors</i> on page 40
Shut down your Palace.	<i>Shutting down your Palace site</i> on page 19



The Palace Client Plugin API

The Palace client software has an open architecture that makes it possible for other programs, such as games, to plug-in. If you're interested in finding out more in joining the developer's program, please go the Partner's page on The Palace website (www.thepalace.com).



Palace Command Summary

The following table provides a list of all special commands (not counting Iptscrae commands and keywords):

- *Guest commands* on page 57
- *Member commands* on page 57
- *Operator commands* on page 59
- *The owner commands* on page 60

Guest commands

The following table lists The Palace guest commands.

Guest Commands	Syntax	Description
help	`help	Displays all special commands available to your user class, in the Log window
page	~page <i>message</i>	Summons help from an operator

Member commands

The following table lists The Palace member commands.

Member Commands	Syntax	Description
add	<code>`add <i>username</i></code>	Sends an invitation to the user to join your buddy list.
hide	<code>`hide on</code> <code>`hide off</code>	Hides you from all other users Unhides you from all other users
hidefrom	<code>`hidefrom <i>name</i></code>	Hides you from user <i>name</i>
mute	<code>`mute <i>name</i></code>	Mutes user <i>name</i>
newroom	<code>`newroom</code> <code>`newroom [<i>roomName</i>]</code>	Creates your member room (one per user) Creates your member room as <i>roomName</i>
page	<code>`page <i>message</i></code> <code>~page <i>message</i></code>	Summons help from an operator
password	<code>`password <i>password</i></code>	Specifies a password for navigation purposes
rclose	<code>`rclose</code>	Closes your member room to further visitors
rdelete	<code>`rdelete</code>	Deletes your member room
re respond	<code>`re <i>message</i></code> <code>`respond <i>message</i></code>	Replies to the last sender of an ESP message
rejectesp	<code>`rejectesp on</code> <code>`rejectesp off</code>	Rejects all incoming ESP messages Stops rejecting ESP messages
rejectprivate	<code>`rejectprivate on</code> <code>`rejectprivate off</code>	Rejects all incoming private messages Stop rejecting private messages
rguests	<code>`rguests on</code> <code>`rguests off</code>	Allows guests to enter your member room Prohibits guests from entering your member room
rhide	<code>`rhide on</code> <code>`rhide off</code>	Hides your member room from the Room List Unhides your member room from the Room List
rkick	<code>`rkick <i>name</i></code>	Kicks <i>name</i> out of your member room
rname	<code>`rname <i>roomName</i></code>	Renames your member room as <i>roomName</i>
ropen	<code>`ropen</code>	Opens your member room to visitors
rowner	<code>`rowner <i>name</i></code>	Transfers ownership of your member room to user <i>name</i>
rpainting	<code>`rpainting on</code> <code>`rpainting off</code>	Enables painting in your member room Disables painting in your member room
rpassword	<code>`rpassword [<i>password</i>]</code>	Password-protects your member room
rpicture	<code>`rpicture <i>filename</i></code>	Sets new background for your member room
rscripts	<code>`rscripts on</code> <code>`rscripts off</code>	Enables scripts in your member room Disables scripts in your member room
runhide	<code>`runhide</code>	Same as <code>`rhide off</code>



Member Commands	Syntax	Description
runkick	<code>`runkick name</code>	Cancels an <code>`rkick</code> command
unhide	<code>`unhide</code>	Same as <code>`hide off</code>
unhidefrom	<code>`unhidefrom name</code>	Unhides you from user <i>name</i>
unmute	<code>`unmute name</code>	Unmutes user <i>name</i>

Operator commands

The following table lists The Palace operator commands.

operator Commands	Syntax	Description
autoannounce	<code>`autoannounce message</code>	Sets the server greeting to <i>message</i>
banip	<code>`banip [minutes] ipAddress</code>	Bans one or more IP addresses for <i>minutes</i> . May use wildcards (i.e.: 12.24.23.*).
banlist	<code>`banlist [-k] [-a] [name ipAddress]</code>	Shows banned users in log window
banuser	<code>`banuser [minutes] name</code>	Bans user <i>name</i> for <i>minutes</i>
bots	<code>`bots on</code> <code>`bots off</code>	Turn cyborgs on server-wide Turn cyborgs off server-wide
comment	<code>`comment ipAddress message</code>	Adds a comment to a banlist
death	<code>`death minutes</code>	Set default death penalty to <i>minutes</i>
delete	<code>`delete</code>	Deletes the current room
duplicate	<code>`duplicate</code>	Duplicates the current room
er	<code>`er</code>	Moves you to the room of the last (non-operator) page
extend	<code>`extend string minutes</code>	Extends the death penalty on a ban record
flood	<code>`flood number</code>	Kill flooders after <i>number</i> events per second
gag	<code>`gag name</code>	Gags user <i>name</i>
glist	<code>`glist [-n -k -l]</code>	Lists information on all users
kill	<code>`kill [minutes] name</code>	Kills (disconnects) user <i>name</i> for <i>minutes</i>

operator Commands	Syntax	Description
list	`list [-n -k -l] [<i>name</i> <i>ipAddress</i>]	Lists information on room users
paint	`paint on `paint off	Turns painting on server-wide Turns painting off server-wide
pin	`pin <i>name</i>	Pins user <i>name</i>
propgag	`propgag <i>name</i>	Propgags member <i>name</i>
purgebanlist	`purgebanlist	Purges elapsed ban records
purgeprops	`purgeprops <i>number</i>	Purges all props older than <i>number</i> days
repage	`repage <i>message</i>	Sends <i>message</i> to the last (non-operator) page
roommaxguests	`roommaxguests <i>number</i>	Sets the max guest occupancy for the current room
roommaxocc	`roommaxocc <i>number</i>	Sets the max occupancy for the current room
sortprops	`sortprops	Sorts the server's prop file index
track	`track [<i>minutes</i>] <i>name</i>	Tracks all sign-ons from user <i>name</i> for <i>minutes</i>
trackip	`trackip [<i>minutes</i>] <i>ipAddress</i>	Tracks all sign-ons from <i>ipAddress</i> . May use wildcards (i.e.: 12.24.23.*).
unban	`unban <i>name</i> `unban <i>ipAddress</i>	Unbans user <i>name</i> Unbans user from <i>ipAddress</i>
ungag	`ungag <i>name</i>	Ungags user <i>name</i>
unpin	`unpin <i>name</i>	Unpins user <i>name</i>
unpropgag	`unpropgag <i>name</i>	Unpropgags member <i>name</i>
untrack	`untrack <i>name</i> `untrack <i>ipAddress</i>	Stops tracking user <i>name</i> Stops tracking user from <i>ipAddress</i>

The owner commands

The following table lists The Palace owner commands.

owner Commands	Syntax	Description
authoring	`authoring on `authoring off	Allows operators to enter Authoring Mode Prevents operators from entering Authoring Mode
ban	`ban <i>name</i>	Permanently banishes <i>name</i> from the server



owner Commands	Syntax	Description
botkill	`botkill on `botkill off	Allows cyborg scripts to kill Prevents cyborg scripts from killing
chatlog	`chatlog on `chatlog off [<i>filename</i>]	Enables chat logging on the server Disables chat logging on the server
custom	`custom on `custom off	Enables custom props on the server Disables custom props on the server
defaultroomocc	`defaultroomocc <i>number</i>	Sets the default room occupancy
downlist	`downlist <i>number</i>	Moves the current room <i>number</i> positions down in the script file
dropzone	`dropzone	Makes the current room a dropzone (front gate)
godpass	`godpass <i>password</i>	Sets the owner password to <i>password</i>
guests	`guests on `guests off	Enables guest access to the server Prevents guest access to the server
killprop	`killprop <i>propID</i>	Kills a specific prop ID
maxocc	`maxocc <i>number</i>	Sets the maximum server occupancy
memberrooms	`memberrooms on `memberrooms off	Allows members to create member rooms Prohibits creation of member rooms
nowhisper	`nowhisper on `nowhisper off	Disables whispering Enables whispering
passwordsecurity	`passwordsecurity	Enables password security (auto-kills after three failed password attempts)
picdir	`picdir <i>path</i>	Sets the source directory for outbound files to <i>path</i>
playerkill	`playerkill on `playerkill off	Allows members to kill Prohibits killing by members
propcontrol	`propcontrol on `propcontrol off `propcontrol <i>userlevel</i>	Restricts who can introduce new props into your Palace.
purgelimit	`purge <i>number</i> `purgelimit <i>number</i>	Sets the purge limit to <i>number</i> days Same as `purge <i>number</i>
recycle	`recycle [<i>number</i>]	Causes guest ID numbers to recycle at <i>number</i>
servername	`servername <i>string</i>	Sets the servername to <i>string</i>
shutdown	`shutdown	Shuts down the server
spooof	`spooof on `spooof off	Allows members to spooof using @x,y commands Prohibits spooofing

owner Commands	Syntax	Description
uplist	`uplist <i>number</i>	Moves the current room <i>number</i> positions up in the script file
wizardkill	`wizardkill on `wizardkill off	Allows operators to kill Prohibits killing by operators
wizards	`wizards on `wizards off	Enables support for operators Disables support for operators
wizardonly	`wizardonly on `wizardonly off	Sets the current room as operator only Removes operator-only setting
wizpass	`wizpass <i>password</i>	Sets the operator password to <i>password</i>

Index

A

- accessing Palace 16
- administer Palace 21
- Allow client scripting preferences item 42
- Allow no more than x avatars in my Palace at a time preferences item 40
- Allow users to make word balloons appear anywhere on screen preferences item 40
- Allow users to whisper to each other preferences item 40
- Announcement 31
- art 22
 - change server 43
 - create 24
- authoring 42
- avatar
 - allow drawing 41
 - allow props 41
 - allow rooms 42
 - create custom 29, 47
 - custom 47
 - purge propps 40
 - set limit 40

B

- balloons, allow anywhere 40

C

- change look of Palace 24
- change Palace name 39
- chat log 40
- Clear Log Window menu item 37
- client, choose which to launch 49
- Client scripts can kick off users preferences item 42
- Close Log File menu item 36
- Close Log File menu item 36
- commands 57
- connect 14, 15
- control panel 35
- Copy menu item 37
- Create rooms preferences item 42
- customize sounds 22
- cyborgs 42

D

- death penalty 45
- Description, set for Palace 31
- Display preferences screen 47
- Don't allow users to re-enter immediately if they are kicked off preferences item 45
- Draw in draw-enabled rooms preferences item 41

E

- entry page 46
 - specify custom 47
- events 18

- Exit menu item 37

F

- File Menu 36
- flooding 45
- flushprops command 21

G

- god, see owner
- graphics, put on different media server 22
- guests, allow 42

H

- Hide the Palace Server Window at Launch preferences item 48

I

- In addition to my entry page, allow The Palace Viewers to access this Palace through the following URLs preferences item 47
- Info Administration Page button 38
- installation 12
- Iptscrae 51

K

- Keep a log of all conversations 40
- Kick off other users preferences item 42
- Kick users off that abuse my Palace by sending lots of messages preferences item 45
- kill command, allow for operators 42
- kill command, allow for users 42

L

- Let me specify a port for connecting to my Palace preferences item 43
- Let me specify my own entry page preferences item 47
- log
 - chat 40
 - clear window 37
 - close file 36
 - get new file 36
- log window, clear 37

M

- menus 36

N

- name of Palace, change 39
- Network preference screen 43
- New Log File menu item 36

O

- operator 26

- allow authoring 42
- allow kill command 42
- allow on Palace 42
- change password 26
- enable 26
- operator password 45
- Operator Password preferences item 45
- Operators can author preferences item 42
- Operators can kick off users preferences item 42
- Options menu 37
- owner 26
 - change password 26
 - enable 26
- owner password 45
- Owner Password preferences item 45

P

- paint, allow on Palace 41
- Palace
 - administer 21
 - allow balloons anywhere 40
 - allow client scripts 42
 - allow custom props 41
 - allow guests 42
 - allow kill command 42
 - allow member rooms 42
 - allow operators 42
 - allow user painting 41
 - allow users to kill 42
 - allow whispering 40
 - announcement 31
 - art and sounds 22
 - authorized URLs 47
 - change look 24
 - change password 26
 - change template 40
 - choose which client to launch 49
 - commands 57
 - connect 14
 - connect through Palace Viewer 15
 - connect through standalone Windows client 14
 - control flooding 45
 - control panel 35
 - create artwork 24
 - create custom avatars 29, 47
 - customize rooms 24
 - customize sounds 22
 - description 31
 - Entry page URL 33
 - get a Palace Profile ID 32
 - getting up and running 13
 - hide panel at launch 48
 - install 12
 - interface 35
 - invite users 32
 - kick off users trying to imitate operators or owners 45
 - limit avatars 40
 - maintain files 21
 - maintain information for web-based users 27
 - maintain site page 30
 - make accessible to others 16
 - maximum occupancy 40
 - maximum room occupancy 40
 - menus 36
 - name 39
 - port setting 43
 - preferences 38
 - publicizing events 18
 - purge props 40
 - register 13
 - registration 36
 - require entry page 46
 - requirements 11
 - set user privileges 23
 - set Window display options 47
 - shut down 37
 - Site Administration Page 31
 - specify custom entry page 47
 - specify which client to start 37
 - start 13
 - stop 19
 - types of users 9
 - use external web server 43
 - web server 22
- Palace Authoring Tool 25
- Palace Authoring Tool button 38
- Palace Authoring Tool menu item 37
- Palace Configuration preferences item 40
- Palace Directory 17
 - maintain site page 30
- Palace Name preferences item 39
- Palace User software 14
- Palace Viewer 14
 - authorized URL list 47
 - choose to launch automatically 49
 - connect through 15
 - control links 28
 - control settings 46
 - create custom avatars 29
 - embed on web page 16, 28
 - specify custom entry page 47
- Palace Viewers preference screen 46
- passwords 45
 - change 26
- Periodically purge props (avatar accessories) preferences item 40
- port 43
- Preferences 38
- Preferences button 38
- Preferences menu item 37
- privileges for visitors 23
- Profile ID 32
- profiles 11, 21
- props
 - allow custom 41
 - purge 40
 - purge command 21
- pserver.prp 21
- purge command 21

R

- Register menu item 36
- registration 13
- Require the Palace Viewer to use my entry page preferences item 46
- requirements 11

room
 allow member 42
 set maximum occupancy 40
running Palace 13

S

Security preference screen 44
set number of users 40
Show an icon in the task bar tray preferences item 48
Site Administration Page 31
Site Administration Page menu item 37
site page 30
sound 22
 change server 43
 customize 22
 put on different media server 22
spoofing, allow 40
start Palace 13
stop Palace 19

T

templates 40
The Enter My Palace now button should preferences
 item 49

U

URL, list of authorized 47
Use an external web server for media preferences
 item 43
Use custom avatars for the Palace Viewer preferences
 item 47
Users 10
 allow scripts 42
 allow to kill 42
 allow whisper 40
 web-based 27

V

Visit my Palace 37
Visitors preferences screen 40

W

Wear their own props preferences item 41
web server 22
 change 43
When a user enters the wrong Owner or Operator
 password, kick the user off after three attempts
 preferences item 45
whispering, allow 40
wizard, see operator